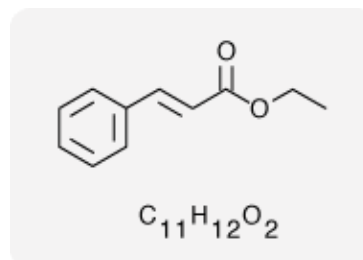


Ethyl cinnamate

Identity

Product Name:	Ethyl cinnamate
Product No.:	660448
Synonyms:	(E)-Ethyl 3-phenylpropenoate
IUPAC Name:	Ethyl (2E)-3-phenylacrylate
INCI Name:	Ethyl Cinnamate
CAS No.:	103-36-6
FEMA No. (USA):	2430
FLAVIS No. (EU):	09.730
Molecular Weight:	176.23



Use

Perfumery, Flavor

Perfumery Characteristics

Odor Description:	aromatic, balsamic, floral, cinnamon
Stability:	body lotion (good), shampoo/shower gel (good), soap (good), AP roll-on 15% (poor), detergent powder conc. (good), cleaner liquid citric acid (poor), cleaner APC liquid (good), bleach (poor)
Perfumery Use:	imparts powdery, balsamic styrax-like elements to floral notes; underlines oriental characteristics of Floriental fragrances
Use Level:	0.5 - 5%

Flavor Characteristics

Flavor Description:	cinnamon, sweet, balsamic, fruity
Useful in:	cocoa, brown others, red fruit, yellow fruit, tropical fruit, sweet others, alcoholics

Printed: June 23, 2017

Symrise AG Mühlenfeldstrasse 1 37603 Holzminden Germany
 Tel: +49(0)5531/90-0
 E-mail: aroma.molecules@symrise.com

These suggestions and data are based on information we believe to be reliable. They are offered in good faith, but without guarantee, as conditions and methods of use of our products are beyond our control. Symrise makes no warranties, either expressed or implied, as to the accuracy or appropriateness of this data. Symrise expressly disclaims any implied warranty of fitness for a particular use. We recommend that prospective users determine for themselves the suitability of Symrise materials and suggestions for any use prior to their adoption. We also recommend that prospective users, as required, obtain approval from appropriate regulatory authorities.

Suggestions for uses of our products or the inclusion of descriptive material from patents and the citation of specific patents in this publication should not be understood as recommending the use of our products in violation of any patent or as a permission or licence to use any patent of Symrise.